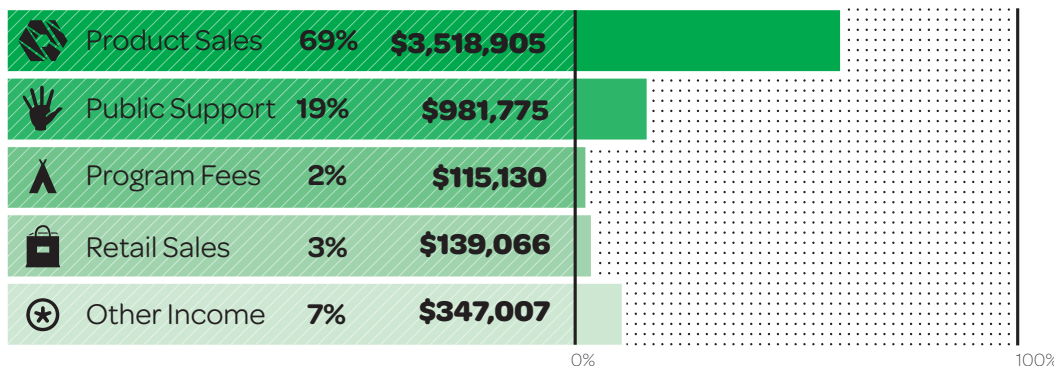


2018 ANNUAL REPORT

TOTAL REVENUE & SUPPORT \$5,101,883



EXPENSES \$5,018,921



- 83%** Program Services \$4,188,402
- 7%** Administrative Support \$345,226
- 10%** Fundraising Expense \$485,293

NET ASSETS

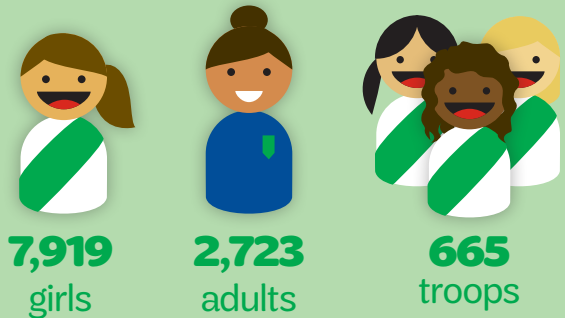
\$13,510,888
Net Assets, beginning of year

\$13,593,850
Net Assets, end of year

\$82,962
Change in Net Assets

IMPACT What did a year of Girl Scouts accomplish?

In the financial year, our council served ...



Our Girl Scouts accomplished ...



Our council provided ...

