



girl scouts
of kansas heartland

LENNOX

2024 Fall Program
Super Seller



**DETACHABLE
ORDER CARD
INSIDE!**



Fall Product Family Guide

2025

THE 2025 FALL PRODUCT PROGRAM

provides girls with an opportunity to be Brave. Fierce. Fun! while learning new skills, building confidence and developing an entrepreneurial mindset.

Benefits of Participating

Girls learn, practice and build on five valuable life skills: Goal Setting, Decision Making, Money Management, People Skills and Business Ethics, all while earning.

Proceeds stay locally for girls, troops, service units and the council, providing funds for activities, trip experiences, projects or even start up funds for the new Girl Scout year.

How the Fall Product Program Works

This program allows girls to begin and grow their entrepreneurial skills by offering family and friends the opportunity to purchase chocolates, magazines, Bark Boxes and more. There are multiple ways for girls to participate:

- **In-person** by taking orders using the direct order card you can find inside and collecting payments.
- **Online** by inviting friends and family to place an order and pay. Customers can choose to have chocolates, magazines and more shipped directly to them, or they can select from the direct order card group of nut and chocolate products that girls can deliver.



Care & Share

Care and Share Program

The Care and Share Program* is a great way for customers to give back! Girls collect donations (in \$6 increments listed on the direct order card) and Girl Scouts of Kansas Heartland takes care of delivering the product. Each donation is credited to the girl's sales like any other sale. Girls earn the Care and Share patch by receiving 10 or more \$6 donations, Mini Scratch Notes pad for 40 or more donations and for 100 or more donations girls receive an invitation to the Elite Entrepreneur Day Experience and have a choice between \$20 Program Credits OR a Mini Karaoke Machine.

*Girl Scouts of Kansas Heartland will be making a donation of product to the Kansas Food Bank. The Kansas Food Bank provides comprehensive and compassionate HungerCare whenever and wherever it is needed to safeguard the health, well-being and productivity of food-insecure Kansas families and their children, as well as senior citizens, the homeless and the chronically ill and impoverished among us.

Important Dates

- ▶ **SEP 5:** Program begins - online ordering opens and girls may sell in-person
- ▶ **OCT 1:** Last day to take orders on the order card
- ▶ **OCT 1:** All orders received in person must be entered into the online system
- ▶ **OCT 6:** Last day for online girl delivery orders
- ▶ **OCT 22:** Nut and chocolate items begin delivery to Service Unit sites
- ▶ **NOV 7: Program ends** - Last day for online orders for magazines and shipped nut and chocolate orders
- ▶ **NOV 8:** Girl payments due to Troop Product Manager
- ▶ **NOV 10:** Final day for girls to make recognition choices online
- ▶ **DECEMBER/JANUARY:** Girl Recognitions arrive

Questions?

Contact us at info@kansasgirlscouts.org or 888-686-MINT (6468)

Join the fun and earn rewards!

Visit your online site to explore all the rewards you can earn.

Here's how to earn two personalized patches with your name and avatar:



Fall Personalized Patch

- Create your avatar
- Send 20+ emails
- Use the "Share My Site" function in the M2 system to ask friends and family for support
- Sell \$425+ in total Fall sales

Girl Scout Cookie Crossover Personalized Patch

- Create your avatar in the M2 system
- Send 20+ emails during the Fall Product Program
- Use the "Share My Site" function in the M2 system during the Fall Product Program
- Sell 325+ packages of cookies during the 2026 Girl Scout Cookie Program



Visit gsnutsandmags.com/gskh to login.

1 Login

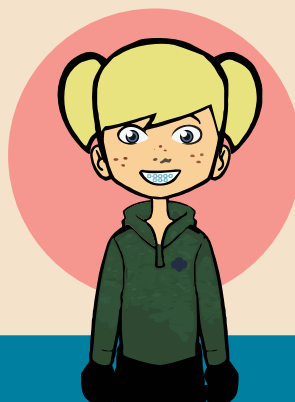


Use the QR code, the URL above, or the council website link. Jump into the program right away—no email required. With your troop number ready, follow the prompts to join the Fall Product Program online.

My troop #

2 Create

Customize your site with an avatar that looks like you, and add a personal message for friends and family. Earn virtual rewards by completing setup steps.



3 Share

Friends and family can help you reach your goals by shopping online! Start by sending emails through M2, so supporters can see your goal and hear your personalized avatar message in your own voice.

Team up with your parent or guardian to safely share your shop link on social media, or via text to market your online business. Remember to follow current GSUSA guidelines for online sales and marketing.

REACH YOUR GOALS!



Keep track of your goals around the bear as you make progress towards reaching 100%!

Your Name

What activities would your troop like to do this year?

How much money you will need to make that happen?

Set your troop goal \$

\$



Set your individual goal \$

\$

Share your goals with friends and family

1

Visit your council's website and click the link to start the online portion of the program.

2

Enter your goals, and your progress will appear online for friends and family to see.

3

Check the product program dates and ensure all orders are placed before the deadline.

4

Tell your customers why they should buy from you and what your group will do with the money.

5

Be sure to thank every customer.

6

Follow all Girl Scout product program and internet safety guidelines. Only contact people you and your family know.



100%

90%

80%

70%

60%

50%

40%

30%

20%

10%

The GIRL SCOUTS® name, mark and all associated trademarks and logotypes, including the Trefoil Design are owned by Girl Scouts of the USA. M2 Media Services is an official GSUSA licensed vendor.



All About Grizzly Bears



Scientific name:

Ursus arctos horribilis

Body length: 6-8 feet

Height: 3 to 4 feet at the shoulder

(standing up to 8 feet on hind legs)

Weight: 400-1,200 pounds

Gestation period: 20 to 30 years in the wild

Life span: 20 to 30 years in the wild

Habitat: Forests, river valleys, and mountainous regions of North America.

Diet: Grizzly bears spend a significant part of their day foraging for food. They have an omnivorous diet, primarily consuming berries, nuts, roots, and grasses. However, they also hunt and scavenge, feeding on fish, small mammals, and carrion. During the salmon run, they gather near rivers and streams to feast on fish, which helps them build up fat reserves. On average, they can eat up to 90 pounds of food per day to prepare for hibernation.

Traits and Behaviors: Grizzly bears are large mammals with thick fur that ranges in color from light brown to dark brown. They are known for the distinctive hump of muscle on their shoulders, which gives them incredible strength. Both males and females have sharp claws, which they use for digging and hunting. Grizzlies love to play! Cubs often wrestle with each other to build strength and learn important survival skills.

Interesting Facts:

- ▶ Grizzlies are strong swimmers and can cross large rivers.
- ▶ Grizzlies will rub against trees to leave their scent and scratch marks.
- ▶ Before hibernation, grizzlies eat up to 20,000 calories a day.
- ▶ Grizzly cubs remain with their mothers for 2-3 years to learn survival skills.
- ▶ Grizzlies are super fast and can run up to 35 miles per hour.
- ▶ Grizzlies have a great sense of smell and can smell food from a mile away.



GRIZZLY BEAR WORD HUNT & LEARN

Directions: Find and circle the **10** bold words below. The words may be vertically, horizontally or diagonally placed. Then, go over the meaning of each word.

C G D S K I I X B B C A R N I V O R E J
D Q B W V Y N H K O X N I Q B V P C Y W
Y T S P I S Q D I T D A J O L G E B Q Y
C X Y O W B O E G B F G H P O A Y I W P
X M A M M A L U Y B E D P I E O E S D O
D U J A Y M H Z P V T R C P B W S U F M
W Y P Y P P O V A O O E N C I V Z F K N
B L A B K Q V P L L N X R A G H M M K I
A D A P T A T I O N B T D R T D I E P V
N F L Q V F X O I Z I O N Q I I G B W O
C Y A U X X X A A F U Z F S Z T O L H R
S B P R E D A T O R N R K W D Z O N W E
F L P H Z S C A V E N G E R O R D R W P
Y M U X U N K H E C O S Y S T E M X Y S
L N R J Z P S J H A B I T A T F G I H W



Mammal

A warm-blooded animal with fur or hair that feeds its young with milk.

Omnivore

An animal that eats both plants, such as fruits and vegetables, and animals, like meat or insects.

Hibernation

A deep sleep that some animals go into during the winter to save energy.

Habitat

The natural environment where an animal lives.

Predator

An animal that hunts other animals for food.

Carnivore

An animal that primarily eats meat.

Ecosystem

A community of living things interacting with each other and their environment.

Territory

An area that an animal defends as its own.

Adaptation

A feature or behavior that helps an animal survive in its environment.

Scavenger

An animal that primarily feeds on dead or decaying organisms, helping to recycle nutrients in the ecosystem.



BRAVE. FIERCE. FUN!

girl scouts
of kansas heartland

• 2025 •
Fall Product Program

My First Name:

My Goal:

My Troop:

DETACHABLE
ORDER CARD
HERE!

A Mint Treasures	\$13	B Deluxe Pecan Clusters w/ Holiday Tin	\$13	C Honey Roasted Mixed Nuts	\$13	D Deluxe Pecan Clusters	\$10
Creamy milk chocolate with a refreshing mint filled center. 6oz. Tin		Roasted pecans covered in caramel and milk chocolate. Perfect for gift giving! 8oz. Tin		Cashews, almonds, peanuts and pecans with a touch of honey. 16oz. Jar		Roasted pecans covered in caramel and milk chocolate. 5oz. Box	
E Vanilla Flavored Honey Roasted Pecans	\$10	F Almonds Covered in a Chocolate Coating	\$10	G Whole Cashews	\$10	H English Butter Toffee	\$10
Honey roasted pecans with vanilla flavoring. 6oz. Poptop Can		Crunchy almonds in a chocolate coating. 9oz. Poptop Can		A classic favorite roasted and salted with sea salt. 8oz. Poptop Can		Crunchy handcrafted toffee drenched in milk chocolate. 5oz. Box	
I Cherry Almond Clusters	\$10	J Peanut Butter Bears	\$9	K Peanut Butter Trail Mix	\$9	L Dark Chocolate Mint Penguins	\$9
Roasted almonds and dried cherries covered in caramel and milk chocolate. 6oz. Box		Milk chocolate bears with a smooth peanut butter filling. 5oz. Box		Peanuts, peanut butter gems, peanut butter mini cups, mini pretzels and cashews. 7oz. Bag		Rich dark chocolate penguins bursting with frosty mint. 5oz. Box	
M Dark Chocolate Caramel Caps	\$9	N Hot Cajun Crunch	\$8	O Dill Pickle Flavored Peanuts	\$8	P Fruit Slices	\$8
Dark chocolate covered caramel topped with sea salt. 6oz. Box		Cajun corn sticks, seasoned peanuts, pretzels and sesame sticks. 7oz. Poptop Can		Crunchy peanuts with an irresistible dill pickle flavor. 9oz. Poptop Can		Fat free! Assorted naturally & artificially fruit flavored chewy candy. 10oz. Bag	

Ⓚ = Kosher ⓀⓀ = Kosher, Dairy Ⓜ = Naturally Gluten Free *CAUTION: ALL products processed on shared equipment with peanut and tree nut containing products.

Shop the Direct Ship Online Store...

for a wider selection of snacks and chocolates, including exclusive items and tins perfect for gift giving. Purchases will be direct shipped and all major credit cards are accepted.

Visit my store at: _____

Add
QR code
here.



girl scouts
of kansas heartland

To view nutritional, kosher and
allergen information please visit our website
at: www.ashdonfarms.com

First Name: _____

Troop: _____

Program Start Date: September 5, 2025

Deliver to Customers: _____

Name

Phone/Email

1.		
2.		
3.		
4.		
5.		
6.		
7.		
8.		
9.		
10.		
11.		
12.		
13.		
14.		
15.		
16.		
17.		
18.		
19.		
20.		
21.		
22.		
23.		
24.		
25.		
26.		
27.		
28.		

Quality products roasted and packaged by: **ASHDON FARMS®**
 The GIRL SCOUTS® name and mark, and all other associated trademarks
 and logotypes, including but not limited to the Trefoil Design, are owned by
 Girl Scouts of the USA. Ashdon Farms is an official GSUSA licensee.

TOTAL
COST EACH
TOTAL \$ AMOUNT SOLD



Share Program Nut Donation

Show your appreciation by giving SHARE
nuts. No product selection required.



Mint Treasures w/Girl Scout Tin	A	B	C	D	E	F	G	H	I	J	K	L	M	N	O	P	Q	Share Program Donation	Amount Sold	Total Number of Items	✓ Paid
Deluxe Pecan Clusters w/ Holiday Tin	B	C	D	E	F	G	H	I	J	K	L	M	N	O	P	Q					
Honey Roasted Mixed Nuts																					
Deluxe Pecan Clusters																					
Vanilla Flavored Honey Roasted Pecans																					
Almonds Covered in a Chocolate Coating																					
Whole Cashews																					
English Butter Toffee																					
Cherry Almond Clusters																					
Peanut Butter Bears																					
Peanut Butter Trail Mix																					
Dark Chocolate Mint Penguins																					
Dark Choc. Caramel Caps w/ Sea Salt																					
Hot Cajun Crunch																					
Dill Pickle Flavored Peanuts																					
Fruit Slices																					
Share Program Donation																					

REWARDS

* Denotes reward choice. Reward selections must be made by 11/10/2025 on your M2 website. Rewards are cumulative. Rewards are subject to change due to unforeseen circumstances. Similar items may be used as substitutions and colors may vary.

Orders due by:

October 1, 2025

Pick up products by:

Turn in money by:

November 8, 2025

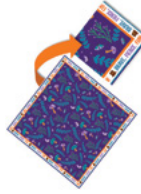
The Elite Entrepreneur Experiences (3E)

The Elite Entrepreneur Experiences (3E) are the same experience for the 2026 Cookie Program. Program Credits will not be an option in the cookie reward lineup for the 3E Day must be achieved again during the Cookie Program. All reward choices are final by the program end date.

► Combined Items



12+ Combined Items
Brave, Fierce, Fun! Patch



25+ Combined Items
Bandana



40+ Combined Items
Grizzly Bear Patch & BFF Journal



60+ Combined Items
Choice of: Small Grizzly Plush*
OR \$7 Program Credits



&



OR



100+ Combined Items
100+ Patch & Choice of: Mesh Shower Caddy*
OR \$15 Program Credits



OR



80+ Combined Items
Choice of: Brave, Fierce, Fun T-Shirt*
OR \$10 Program Credits



225+ Combined Items
Telescopic Camping Stool



OR

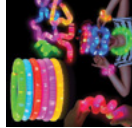


275+ Combined Items
Choice of: 3E Family Adventure
OR \$150 Program Credits*



325+ Combined Items
Fire Pit Bundle

► Magazine Items



8+ Mags & More Items
Super Seller Mags Patch & Camping Glow Tube

► Emails



20+ Emails Sent
2025 Patch

► Share Items



10+ Share Items
Care to Share Patch



40+ Share Items
Mini Scratch Notes



100+ Share Items
3E Day Event - May 30, 2026 &
Choice of: Mini Karaoke Machine*
OR \$20 Program Credits

Visit www.gsnuitsandmags.com/GSKH to create your website!

Earn these two special patches with your name and avatar on them!

Fall Personalized Patch:



- Create your avatar
 - Send 20+ emails
 - Use the "Share My Site" function in the M2 system to ask friends and family for support
 - Sell \$425+ in total Fall sales
- Personalize your patch by choosing from two scenes.*

Girl Scout Cookie Crossover Personalized Patch:



- Create your avatar in the M2 system
- Send 20+ emails in the M2 system during the Fall Product Program
- Use the "Share My Site" function during the Fall Product Program
- Sell 325+ packages of cookies during the 2026 Girl Scout Cookie Program



HOW TO DRAW A GRIZZLY BEAR

Follow the step-by-step instructions to draw your bear.



1

Draw the eyes



2

Draw the nose and mouth



3

Draw the eyebrows



4

Draw the ears



5

Draw the head



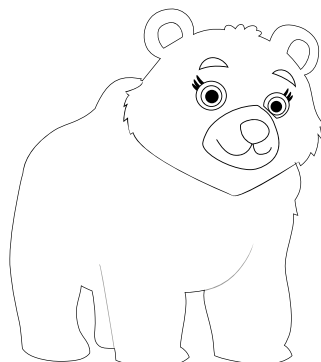
6

Draw the body



7

Draw the chest and leg lines



8

Color your bear in!



BRAVE. FIERCE. FUN!



2025

BRAVE. FIERCE. FUN!

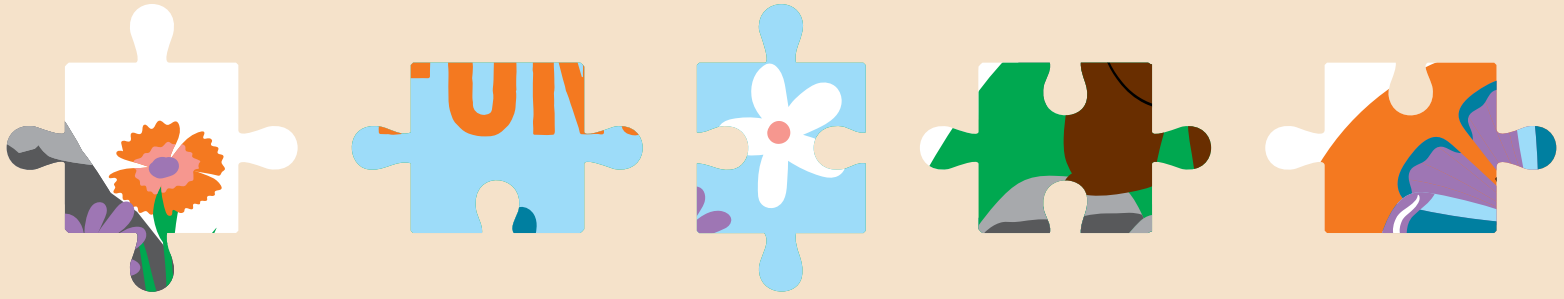


2025

GRIZZLY BEAR ADVENTURE PUZZLE

Option 1: Cut out the puzzle pieces, then match and glue them in the correct spots to complete the scene!

Option 2: Draw a line from each puzzle piece to the correct spot.



GRIZZLY BEAR ADVENTURE SCENE

Cut out the items and arrange them to create your own grizzly bear forest scene!



**It's time to renew if
you haven't already!**

You must be a
2026 member to
participate in the
2025 Fall Product Program



**Scan here to renew your
membership for 2026!**



Contact your Troop
Product Manager or
council Product Specialist
to find out how to
participate in the 2025
Fall Product Program.