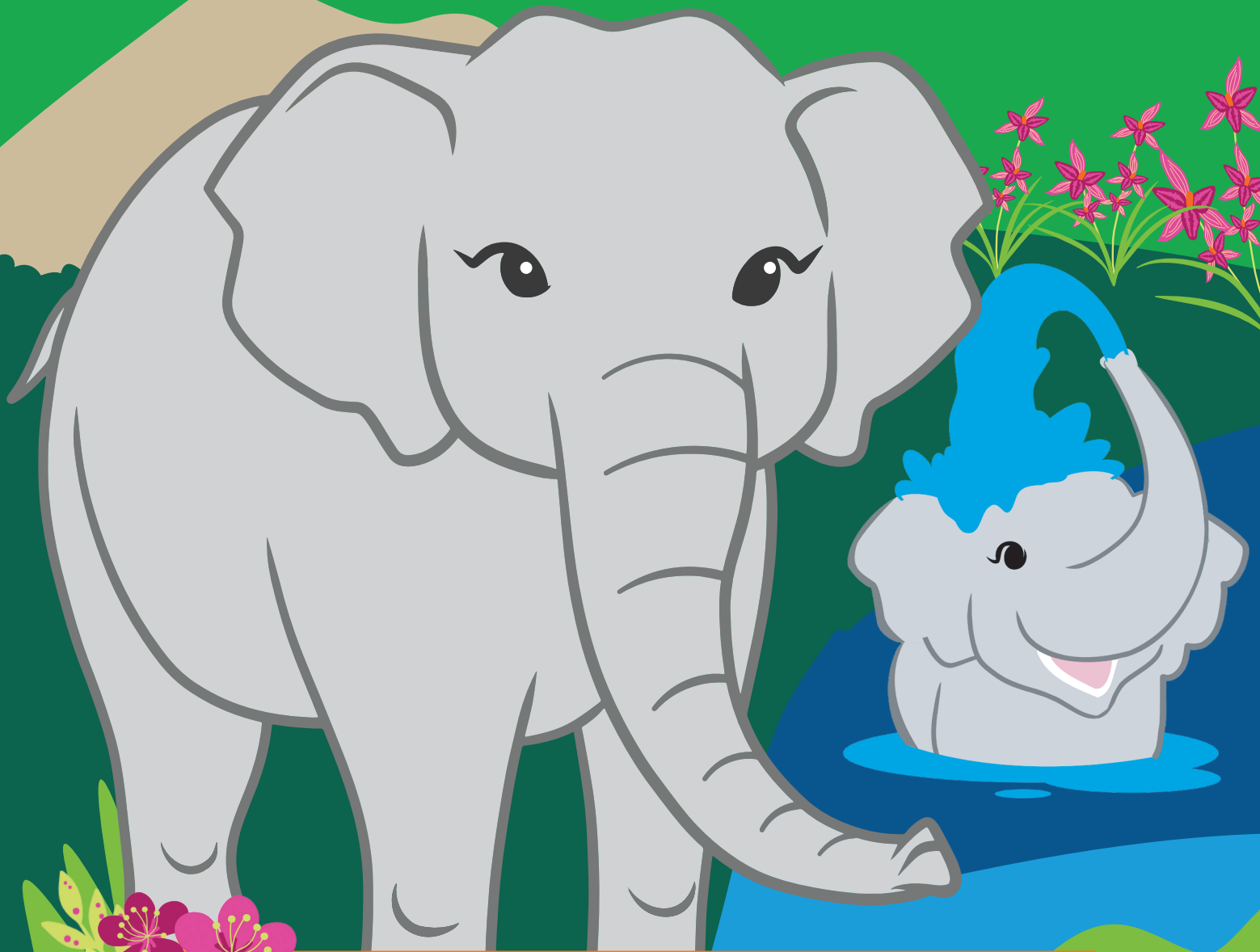


EMBRACE
POSSIBILITY



2024 Fall Product Program Family Guide

The 2024 Fall Product Program

provides girls with an opportunity to "EMBRACE POSSIBILITY" while learning new skills, building confidence and developing an entrepreneurial mindset

EMBRACE
POSSIBILITY

Benefits of Participating

Girls learn, practice and build on five valuable life skills: Goal Setting, Decision Making, Money Management, People Skills and Business Ethics, all while earning.

Proceeds stay locally for girls, troops, service units and the council, providing funds for activities, trip experiences, projects or even start up funds for the new Girl Scout year.

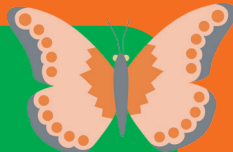
How the Fall Product Program Works

This program allows girls to begin and grow their entrepreneurial skills by offering family and friends the opportunity to purchase delicious nuts, chocolates and magazines. There are multiple ways for girls to participate:

- In-person by taking orders using the direct order card and collecting payments.
- Online by inviting friends and family to place an order and pay. Customers can choose to have nuts, chocolates, or magazines shipped directly to them, or they can select from the direct order card group of nut and chocolate products that girls can deliver.



Care & Share



Care and Share Program

The Care and Share Program* is a great way for customers to give back! Girls collect donations (in \$6 increments listed on the direct order card) and Girl Scouts of Kansas Heartland takes care of delivering the product. Each donation is credited to the girl's sales like any other sale. Girls earn the Care and Share patch by receiving 10 or more \$6 donations, LED String Lights for 30 or more donations and for 100 or more donations girls receive an invitation to the Elite Entrepreneur Day Experience and have a choice between \$20 Program Credits OR a Camping Plush Blanket.

*Girl Scouts of Kansas Heartland will be making a donation of product to the Kansas Food Bank. The Kansas Food Bank provides comprehensive and compassionate HungerCare whenever and wherever it is needed to safeguard the health, well-being and productivity of food-insecure Kansas families and their children, as well as senior citizens, the homeless and the chronically ill and impoverished among us.

Important Dates

- ▶ **SEP 6:** Program begins - online ordering opens and girls may sell in-person
- ▶ **OCT 2:** Last day to take orders on the order card
- ▶ **OCT 2:** All orders received in person must be entered into the online system
- ▶ **OCT 7:** Last day for online girl delivery orders
- ▶ **OCT 23:** Nut and chocolate items begin delivery to Service Unit sites
- ▶ **NOV 8:** Program ends - Last day for online orders for magazines, shipped nuts and chocolate orders
- ▶ **NOV 9:** Final day for girls to make recognition choices online
- ▶ **NOV 9:** Girl payments due to Troop Product Manager
- ▶ **DECEMBER/JANUARY:** Girl Recognitions arrive

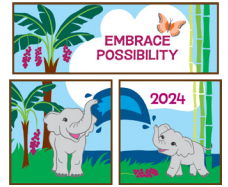
Questions?

Contact us at info@kansasgirlscouts.org or 888-686-MINT (6468)

PARTICIPATE and EARN rewards!

Check your online site to learn more about all of the rewards you can earn.

Discover how to earn two personalized patches with your name and avatar below.



Collect theme patches that fit together!

Fall Personalized Patch

- Create your avatar
- Send 18+ emails
- Use the "Share My Site" function in the M2 system to ask friends and family for support
- Sell \$425+ in total Fall sales

Personalize by choosing from two scenes.

Girl Scout Cookie Crossover Personalized Patch

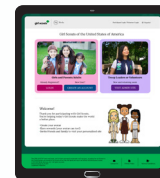
- Create your avatar in the M2 system
- Send 18+ emails during the Fall Product Program
- Use the "Share My Site" function in the M2 system during the Fall Product Program
- Sell 375+ packages of cookies during the 2025 Girl Scout Cookie Program

LOGIN, CREATE and SHARE with 3 easy steps.

Visit www.gsnutsandmags.com/gskh

Use the QR Code, enter the URL above or click the link from the council website. Have your troop number ready and follow the prompts to participate in the online Fall Product Program.

My troop number is _____



Scan here ↓



1

Build your site

To customize your site, you can create an avatar that looks like you and also record a personalized message for your avatar to deliver to friends and family. Don't miss all of the ways you can earn virtual rewards when you complete various setup steps for your personalized site.



3

Contact friends and family

Friends and family can easily help you reach your goals when they shop online! Get started by sending emails through the M2 system. Your supporters will see your goal and hear your avatar deliver a message customized by you in your voice. Don't forget that you can also share your link to shop on social media or send a text, with the help of your parent/adult. Please follow current GSUSA guidelines for online sales and marketing.



Elite Entrepreneur Experiences



**150+ Combined Items
or
\$50 Program Credits**

Blast Off Bay
Saturday
May 3, 2025
2PM to 5PM

**250+ Combined Items
or
\$150 Program Credits**

**Worlds of Fun
Family Adventure**
at your own time



Council Fall Top Seller



Be the council "Super Seller" for the 2024 Fall Product Program and you and your caregiver will be the CEO's Honored Guest at the annual JPLS Luncheon on Wednesday, April 30, 2025

You will receive luncheon recognition and be presented with a pearl necklace.

Your Name

Discuss what activities your troop would like to do this year

Determine how much money you will need to make that happen

Set a fall product goal based on your troop budget

\$

My individual goal

\$

My troop goal

Share your goals with friends and family

1

Start by going to your council's website and clicking on the link to participate in the online portion of the program.

2

Enter your goals and your progress will appear on your online site for friends and family to see.

3

Check the dates of the product program and make sure to have all orders before the end date.

4

Practice telling customers about the benefits of buying and reading magazines. You might even suggest specific magazines to friends and family based upon your knowledge of their interests.

5

Thank every customer, whether they buy online or in person.

6

Make sure to follow all Girl Scout safety activity checkpoints for computer/online use and council sponsored product program. Only contact people you and your family know.

100%

90%

80%

70%

60%

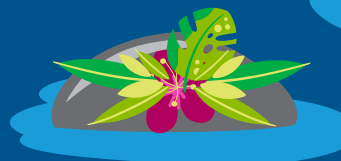
50%

40%

30%

20%

10%



Mark your progress in the water as you get closer to reaching your goal.

All About Asian Elephants

**Scientific name:**

Elephas maximus

Body length: 18-21 feet

Height: 6 to 12 feet tall
at the shoulder

Weight: 4,400 – 12,000 pounds

Gestation period: 18-22 months

Life span: 60 to 70 years

Diet: Diet: they spend up to 19 hours a day feeding mostly on grasses. However, they also eat large amounts of tree bark, roots, leaves, and small stems. They enjoy cultivated crops such as bananas, rice, and sugarcane and always stay close to a source of water because they need to drink water at least once a day. They can consume around 300 pounds of food a day!

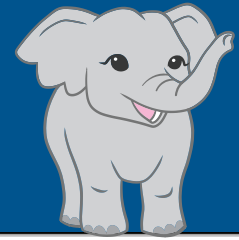
Characteristics: they are thick-skinned herbivores with fan-shaped ears and large trunks. Both males and females can have tusks, though not all of them develop them. Tusks tend to be smaller in Asian elephants compared to their African relatives.

Interesting Facts:

- ▶ The Asian elephant is the largest land mammal on the Asian continent.
- ▶ They are extremely sociable, forming groups of six to seven related females that are led by the oldest female, the matriarch.
- ▶ Their trunks contain around 100,000 muscles and can be used for tasks as delicate as picking up small objects or as powerful as uprooting trees.
- ▶ Elephants can use low-frequency sound waves for communication between members of the herd and individuals outside the herd and can carry these sounds for distances of up to 10 miles.

ASIAN ELEPHANTS FACTS & FIND

Directions: Find and circle all the bold words that describe the Asian elephant in the boxes below. The words may be vertically, horizontally or diagonally placed. Then, go over what each of the words mean.



H Y X I K U A S I A S X E V Z P G W
E I Y S S E W G E S T A T I O N C G
R G C A T M W A X J F T T W V F V B
B T C P R S A L T D Y A Q U A F M D
I I A K O M B T P E W E U G S G K H
V S L S N M O P R F R D S V T K T C
O Y F F G W Q J L I F U A J Y J S T
R J C O M M U N I C A T I O N O E J
E T P L M B X Y Z G C R H E V E P W
S D S A A K P R R F I P C S F M G W
K S P H J L C O Q X B O G H Z O C Y
N D Y U E N D A N G E R E D M P H I

MATRIARCH

Is known as the dominant older female that leads the herd.

HERBIVORES

Their diet primarily consists of grasses, fruits, leaves and bark.

STRONG

They are known for their impressive strength in being able to lift and carry heavy objects.

TUSKS

These can be found on both males and females. However, they are more prominent and generally larger in males.

COMMUNICATION

They use low-frequency sound waves for communication between members of the herd and outside of the herd. These sounds can carry for distances up to 10 miles.

ASIA

The largest continent on earth and where Asian Elephants can be found.

GESTATION

They have one of the longest gestation periods among mammals. Babies develop 18 to 22 months.

CALF

A baby Asian elephant is called a calf and are cared for by their mother and the rest of the herd.

WATER

Asian elephants depend on water, often found near large sources. They consume 30 to 50 gallons daily.

ENDANGERED

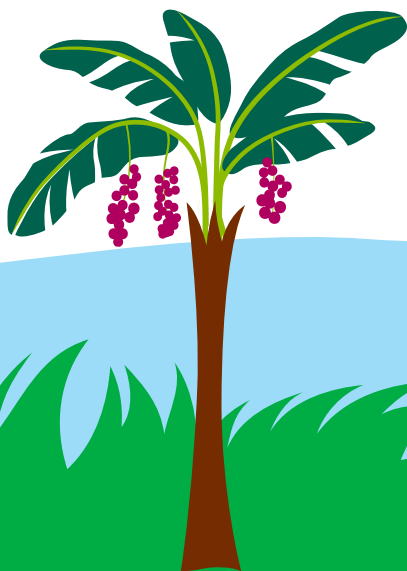
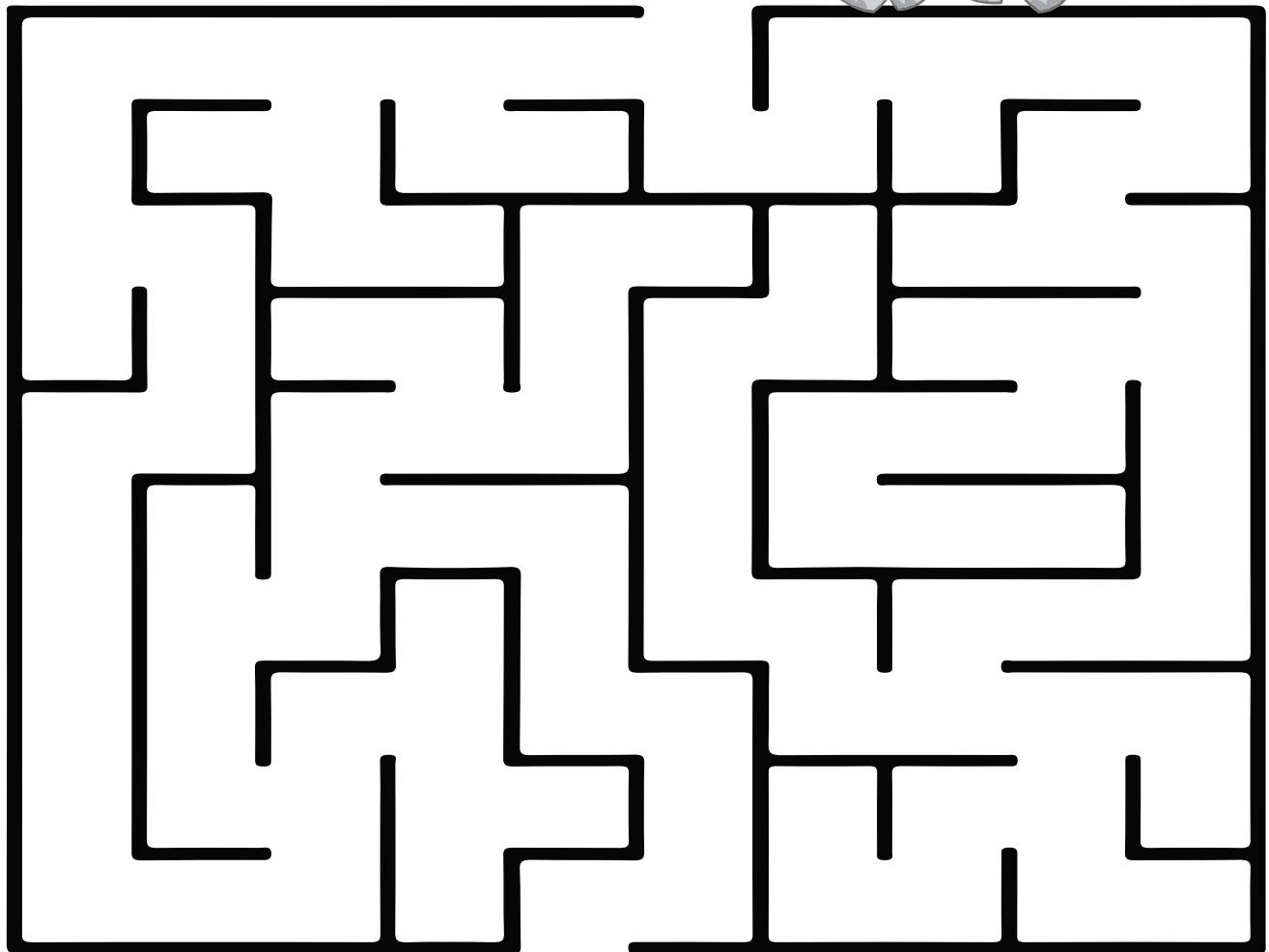
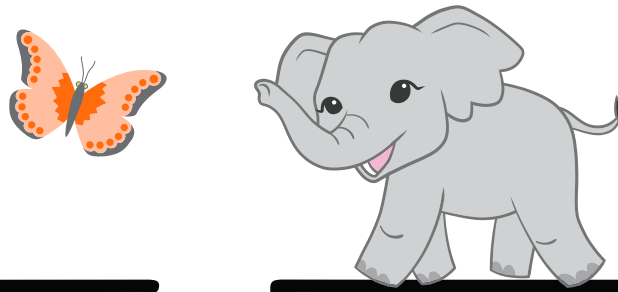
Endangered due to habitat loss and ivory poaching, these elephants confront multiple survival threats.

EMBRACE POSSIBILITY

2024

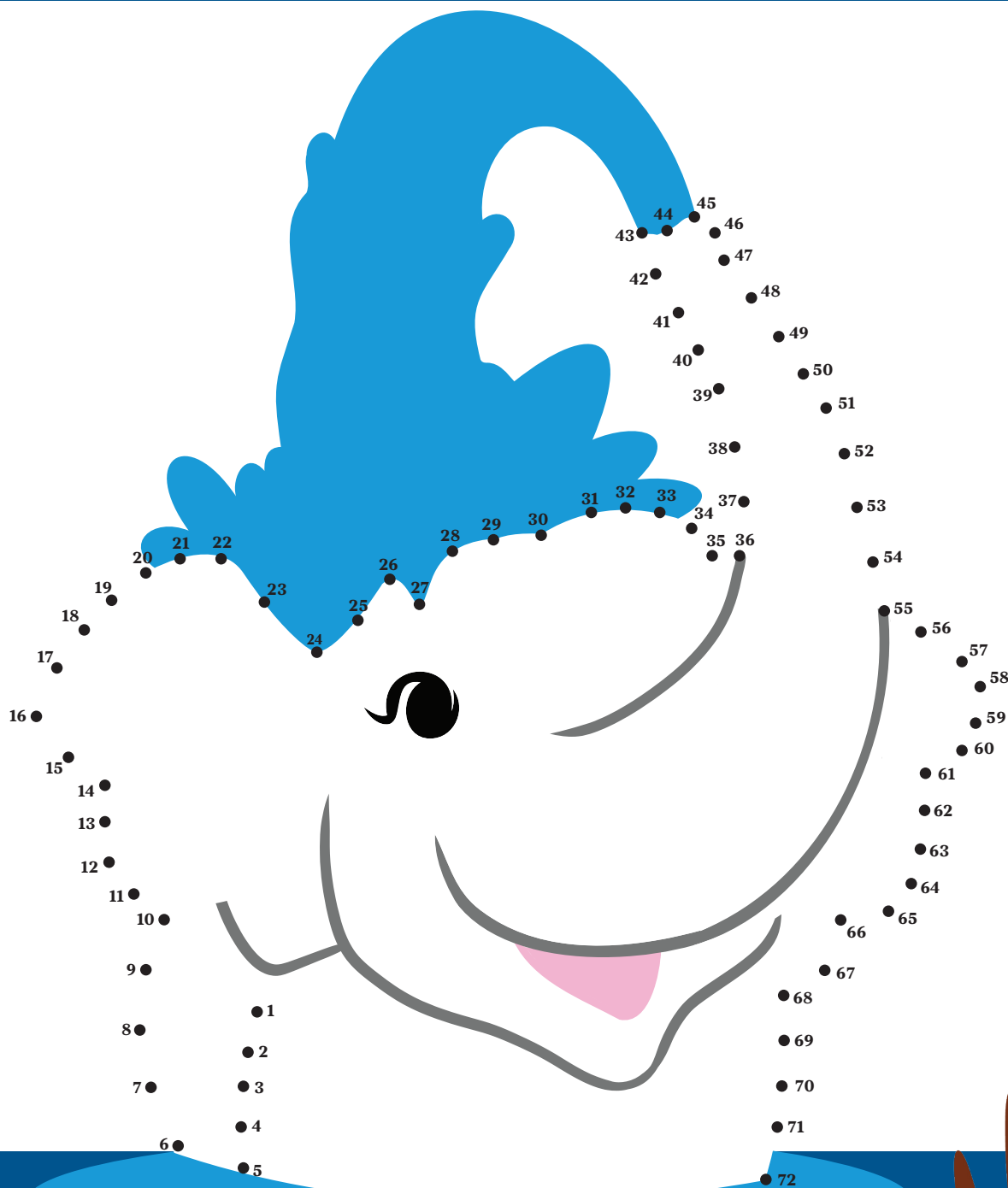


HELP THE ELEPHANT GET TO THE TREE!

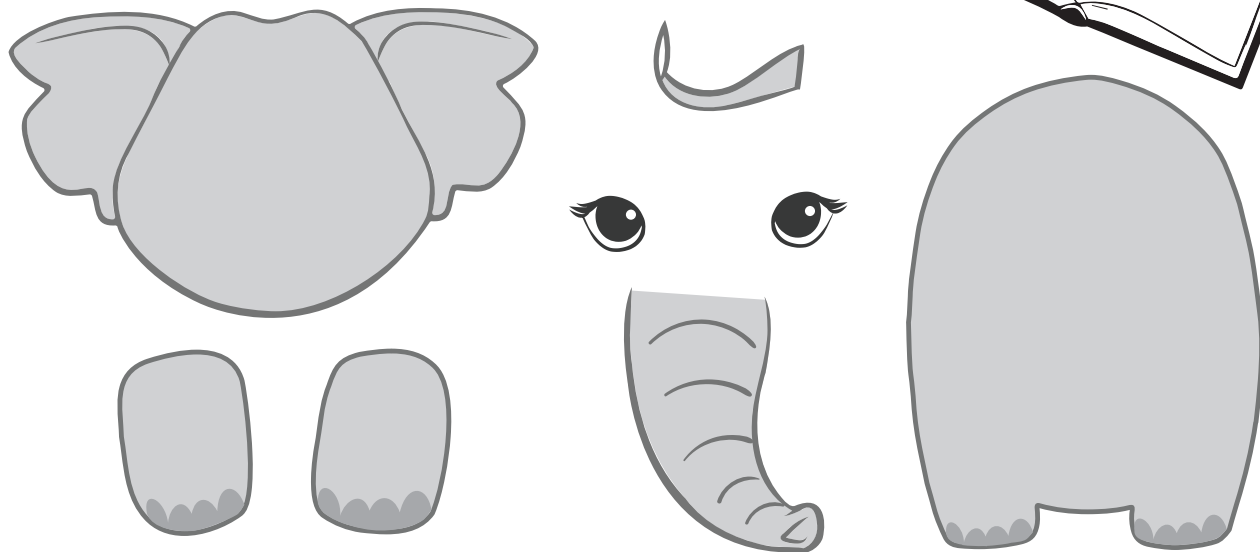
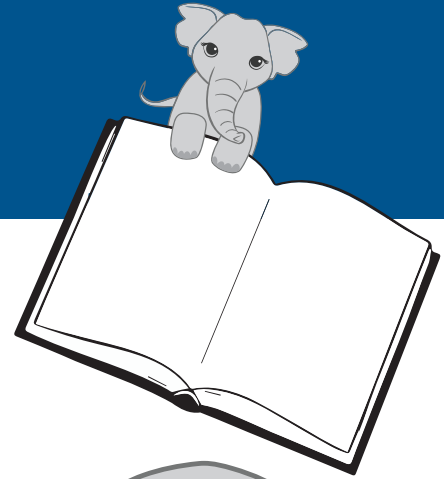


ASIAN ELEPHANT DOT TO DOT

Connect all the dots to see who is playing in the water.



BUILD AN ASIAN ELEPHANT BOOKMARK



HOW TO ASSEMBLE YOUR ELEPHANT

1. Print and cut out the elephant pieces.
2. Glue the head onto the body.
3. Glue the feet onto the body. Make sure not to put glue at the bottom of the feet so your book page can slide underneath.
4. Glue the eyes and trunk on the head.
5. Glue the tail to the body (from behind).
6. Read lots of books!

SUPPLIES NEEDED

- Printed template
- Paper
- Scissors
- Glue

girlscouts 
of kansas heartland
360 Lexington Road
Wichita, KS 67218
kansasgirlscouts.org

Non-Profit
Organization
U.S. Postage
PAID
Wichita, KS
Permit No. 1106

**It's time to renew if
you haven't already!**

You must be a 2025
member to participate
in the 2024 Fall
Product Program



EMBRACE POSSIBILITY

Contact your Troop
Product Manager or
council Product Specialist
to find out how to
participate in the 2024
Fall Product Program.

