



# THE SCOOP

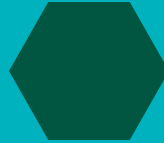
GIRL SCOUTS OF KANSAS HEARTLAND



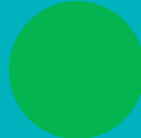
# April 2025 Agenda



Troop Finance Reports



Summer Camp Highlights



Midnight Madness



Volunteer Trainings



Cookies on Tap





# Girl Program



**Major  
Summer Camp  
Deadline!  
May 1, 2025!!**

**Camp is Coming!  
Just 42 Days Until Week 1!**

**The Importance of May 1st!**

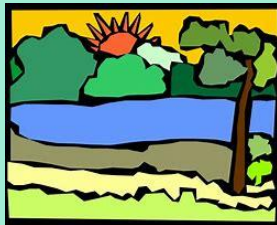
- 1. Last day to complete camp registration to guarantee Free Camp T-Shirt (Girls only)**
- 2. Final Balance Payments Due (for those who reserved with a \$25 deposit)**
- 3. Last day to complete Council-Hosted camp registration before price increase!**
  - **4-Day Camps +\$15**
  - **4-Night Camps +\$25**
  - **2-Night Camps +\$15**
  - **1-Day/Night Camps +\$5**





## Make it Fashion

Day Camp: 6/9-12  
Overnight Camp: 6/10-12



## Express Yourself

Day Camp: 6/16-19



## Drama Queens

Day Camp: 6/23-26  
Overnight Camp: 6/22-26



## Imagination

Overnight Camp: 7/8-10



## A "Wicked" Fun Camp

Day Camp: 7/14-17  
Overnight Camp: 7/13-17



## Welcome to the Jungle

Day Camp: 7/21-24  
Overnight Camp: 7/20-24



## Strawberry Shortcake Camp

Day Camp: 7/28-7/31

## Additional Camp Fun

Glamping Wednesday and  
Bonus Friday!

Turtles and Kayaks

Outlive, Outlast: The Zombie  
Apocalypse

Branching Out!

Tanking and Adventure in  
Omaha Nebraska!



# Upcoming Events

## Girl Scout Fun all Spring and Summer long!

- **5/10 Tall Tales: Parsons** (Register by: 4/28)
- **5/31 Day Trip to OKC RiverSport** (Register by: 5/12)
- **6/4 Cowtown hosts Daisy Day** (Register by: 5/19)
- **6/5 Cowtown hosts Putting you in the Past**  
(Register by: 5/19)
- **6/6 Cowtown hosts Games to Pass the Time Away** (Register by: 5/26)
- **6/27 Girl Scout Night @ Wind Surge Baseball**  
(Register by: 6/16)
- **7/28-7/30 WSU Nursing Bootcamp** (Register by: 7/1)

**And so much more...check out our website!**



# Midnight Madness @ WSF Aviate Extreme Air Sports

Girl Scouts who renew their membership for 2026 by July 21 will take over the Wichita Sports Forum-Aviate for another epic sleepover! For \$25 per person, girls and their families will enjoy a night filled with trampoline fun, basketball and volleyball games, yard games, arts and crafts, movies, and so much more. Adults who choose not to participate in the Aviate Trampoline Park can receive a discount of \$10. Midnight Madness at WSF Aviate is sure to be an awesome exclusive event for all our Girl Scout families who renew their annual membership by 7/21. Membership renewal opens on 4/1, don't wait renew today! Then be sure to register for this awesome event! Fun patch provided.





# Travel Applications

- When do you need to complete a Travel Application?
- If you are completing a Checkfront application/reservation to stay on council-owned property, you **DO NOT** need to fill out a Travel Application.
- If you are planning an overnight in your own town or an overnight out of town for 1 or more nights, and you are not staying on council-owned property, you **DO** need to fill out a Travel Application.
- Any questions?

Remember that troop travel is a very important step in the progression of Girl Scout activities, our goal is to encourage independence, courage and to challenge our girls to do the things they love!

Let's take a minute and share, in the chat, some great travel experiences your troop has had or ideas of places others might check out when planning troop travel!





## Travel Progression



### Local Field Trip

Visit a nearby spot, possibly during your regular meeting time.

Recommended for:  
Daisy, Brownie

Minimum age:  
Daisy

### Day Trip

Plan an all-day trip. Try a council event or local attraction.

Recommended for:  
Daisy, Brownie, Junior

Minimum age:  
Daisy

### Overnight

Help Girl Scouts plan their first single overnight—maybe at a council event, camp, or nearby attraction.

Recommended for:  
Brownie, Junior

Minimum age:  
Daisy (with Day Trip experience in Girl Scouting)

### Short Trip

Spend two to three nights in your region, up to a six-hour drive away from home. Girl Scouts plan budget and schedule.

Recommended for:  
Junior, Cadette

Minimum age:  
Brownie (with Overnight experience in Girl Scouting)

### Extended Trip

Travel the country! Extended trips last four or more nights OR take place more than a six-hour drive from home.

Recommended for:  
Cadette, Senior, Ambassador

Minimum age:  
Junior (with Short Trip experience in Girl Scouting)

### International Trip

Travel the world! These life-changing trips usually take two to three years to save for, plan, and prepare.

Recommended for:  
Senior, Ambassador

Minimum age:  
Cadette (with Extended Trip experience in Girl Scouting)

### Individual Travel

Individual Girl Scouts can sign up for independent travel and meet new Girl Scout friends through council-offered travel opportunities or GSUSA's Destinations program.

Recommended for:  
Senior, Ambassador

Minimum age:  
Cadette (with Extended Trip experience in Girl Scouting)

When moving up to the next step, consider each Girl Scout's independence, ability to work well in groups, flexibility, and experience with cultures other than their own.



Through progression, Girl Scouts build skills to become lifelong travelers and global citizens. Girl Scouts take the lead in planning a new adventure at every level.



# 2025/2026 School Year Volunteer Events

Service Unit/Volunteer Event Applications for  
2025/2026 School Year are Due May 15, 2025

Applications need to be completed via our current  
Jotform so the events can be added to our school year

SPARK magazine:

<https://www.jotform.com/form/242985179482068>

Remember the more information you provide the easier  
it is for us to get the information out to our Girl Scouts!



# Group Payment

## Introducing Group Payment feature in Campwise

The Group Payment feature in Campwise allows Troops or Service Units to pay all or a portion of an event registration fee for the participants. We know that losing the ability to do the entire registration in Ultracamp is a big change for everyone, but we really love this Campwise feature that maintains the ability for troops to pay, but returns the responsibility for forms and waivers to the parents/guardians. Most council-hosted, volunteer-hosted, and partner-hosted events are eligible for a Group Payment, with a few exceptions. A Troop Leader or Service Unit volunteer requests a Group Payment via a [Jotform](#) to provide the needed details to set it up. To submit the request, we do not need to know the individual participant names or the event options or upgrades, but do request a firm number be provided so that troops aren't holding spots that will go unused.

Click the link to the [Jotform](#) to learn more about the Group Payment feature, eligible events, timeline, and expectations for both troop leaders and parents/guardians.

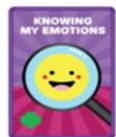


## May is

Mental Wellness  
Awareness Month

And

Asian American  
Native Hawaiian  
Pacific Islander  
Heritage Month



## June is

National Making  
Week (June 17-23)



And

LGBTQ+  
Pride Month



## Summer is a great time to focus on

Girl Scouts Love  
The Outdoors  
Challenge 2025

Completed your 25 activities?  
**Get the patch!**







# Volunteer Training and Info



# IGNITE



## TOUCHDOWN



Learn the ultimate Girl Scout game plan with our weekend volunteer retreat. Join the huddle and let us coach you on what it means to be a Girl Scout volunteer with educational workshops! Also enjoy various camp activities such as swimming, archery, crafts, and even tackle your fears on the zipline! Don't fumble your opportunity to come be a part of an amazing team and take a page out of our playbook!

**Adult Cost: \$50**  
Starwoods Girl Scout Center  
7800 S. 103rd St. W., Clearwater  
**Date/Time:** 6/6 at 6 p.m. to 6/8 at 12 p.m.  
**Registration Deadline:** 5/19

*Includes five meals, snacks, workshops and more! You'll want to pack a sack supper for Friday evening or eat before you arrive. T-Shirts will be available to purchase when you register.*



An email will be sent after the deadline date so you can choose your workshops and sleeping arrangements: cabin bunks, lodge (floor or air mattress), platform tents, or you can provide your own personal tent to camp. During this same weekend, we'll also offer a First Aid/CPR/AED course, USA Archery Level 1 Instructor certification, and a Small Craft Safety course. You'll need to register for these items separately.

# Registration deadline is fast approaching for IGNITE!

## Building a stronger team with multiple workshops including:



**Special Teams/Special Plays:** Learn how to manage troop finances and complete your Troop Finance Report with ease

**After The Cookie Crumbles:** Use up those leftover cookies and boxes with easy no bake recipes and crafts!

**Calling an Audible:** Didn't have time to plan a troop meeting this week? These activities will save the day!

**Outdoor Cooking:** This hands on workshop will have you making delicious recipes to make while camping

**Keep Your Eyes on the Ball:** Tips and tricks on how to keep parents engaged and helpful

**Pep Talk-Refocusing to Come Back For The Win:** This workshop will help you understand what burnout truly is, recognize early signs, and learn techniques to manage it

**Going for The Long Ball:** Planning a troop trip but need some guidance? We can help!

**Coaching Through The Penalties:** Learn how to navigate through behaviors and neurodivergence

**Half Time-Taking Time to Lock In:** Self care is important-take some time to unwind with this relaxing workshop

**The Best Defense is a Good Offense: Preventing Human Trafficking and Child Exploitation:** Get a clear understanding of human trafficking, how it intersects with child exploitation and how to address potential exploitation online and in person



Sign up on UltraCamp by May 19th.

Some SU's will help fund this training opportunity!

It's open to all volunteers – come enjoy networking with others, playing at camp, exploring new troop ideas, and personal development!

For more info, see the flyer on Volunteer Connections or reach out to [info@gskh.org](mailto:info@gskh.org)





# Troop Finance Reports

This annual report is **REQUIRED** for every troop at Girl Scouts of Kansas Heartland! It is an accounting of all expenses spent and income received by the troop during the year.

Each troop leader/checking account signer will receive an email with details on how and when to submit the Troop Finance Report (TFR) the week of May 5. The TFR will be due to the council no later than June 15th!

Only one TFR is required so work to determine which troop leader/signer will be submitting the TFR.

## **Prepare NOW! Follow these steps:**

Make sure to have a copy of your May 2024, December 2024 and watch for your April 2025 bank statements. These will need to be attached to your TFR.

Balance your checking account. You can use the Detailed Record of Troop Funds spreadsheet to track your income and expenses – it automatically puts the amounts into the same fields you will need when filling out the TFR.

Make sure you have all your receipts for expenses and income.





# VOLUNTEER TRAINING OPPORTUNITIES:

Heartland Essentials - April 30, May 21

ASHI First Aid/CPR/AED - May 6, Wichita; May  
10, Garden City; June 6, Starwoods

Youth Mental Health First Aid – May 31

Outdoor Camping – May 10, Garden City

USA Archery – June 8, Starwoods

Small Craft Safety – June 8, Starwoods





## Volunteer Toolkit News

# All Badge Booklets Now Available on the Volunteer Toolkit

**Digital versions of all badge booklets  
are now accessible on the VTK!**

You will find this content on each meeting page in the VTK, directly under the steps and purpose of the badge. Due to digital licensing limitations for older badges, some content is presented in a plain text PDF; newer badges are in the fully designed badge booklet. You will also find easy links to purchase the badge and printed booklet if you choose to.





# Council Shop



## New Girl Scout Custom Upcycled Uniform Tote Bag

We're excited to announce the introduction of the New Girl Scout Custom Upcycled Uniform Tote Bag! Wondering what to do with your old Girl Scout sash or vest? This is a wonderful opportunity to create a lasting memory with a custom tote bag designed with your own sash, vest, or tunic and a variety of rescued materials. Just send in your uniform and we'll create a tote bag as unique as you are. This is the perfect gift for Girl Scouts of all ages, alums, or bridging Girl Scouts... or gift yourself a lasting keepsake!

[https://www.girlscoutshop.com/girl-scout-customized-tote-bag?utm\\_source=salesforce&utm\\_medium=email&utm\\_campaign=q2\\_030625\\_gsm\\_upcycledtote](https://www.girlscoutshop.com/girl-scout-customized-tote-bag?utm_source=salesforce&utm_medium=email&utm_campaign=q2_030625_gsm_upcycledtote)



### Custom Upcycled Girl Scout Uniform Tote Bag

ITEM: 40065

★★★★★ Write the first review!

**\$65.00**

QUANTITY

[ADD TO WISHLIST](#)

[ADD TO CART](#)

#### ♥ Product Details

Your uniform tells a story. It's a meaningful symbol of your Girl Scout experience. Now you can tell your story and create a customized and sustainable tote bag as unique as you are. Send us your uniform and we'll create a custom tote bag with your sash, vest or tunic and a variety of rescued material. Perfect for active lifestyles and Girl Scouts of all ages. Give a gift to a special Girl Scout or gift yourself a lasting keepsake.





# Recruitment/Membership



# Only 2 more days to get TShirt Incentive for Renewing Early!



**Girls Renewed between April 1 – May 1 will be eligible for a free limited-edition t-shirt**

**Cost for Girl renewal is \$60**

**T-shirts will be available for purchase for adults and volunteers. Cost is \$20 and must be ordered by May 1**

**Girl and Adult T-shirt sizes and orders will be collected through Jotform beginning April 1**

**Girls can use Program Credits for membership fees**

**Financial Assistance is available for both girls and adults. A completed application is required for girls and adults.**

**Girls registered through July 21 are eligible to attend Midnight Madness!**



*Graduating Girl Scout Ambassadors (grade 12) may use Program Credits by September 30 immediately following their graduation for the following:*

- The purchase of a Young Alumnae Lifetime Membership at a discounted rate of \$200
- Purchases in Council shops
- Purchase online shop items, family must contact the council shop to place the order
- Council-approved Troop trips, travel or Destinations. The council-approved Troop trip must include at least 50% of the Troop members

*Program Credits may not be donated to another girl or Troop.*

Graduating Ambassadors have until September 15, 2025 to purchase a YA Lifetime membership using Program Credits

Unused Program Credits expire on **September 30, 2025**





•A Girl Scout Lifetime Membership costs \$400 or, for alums under age 30 and currently registered volunteers with ten or more years of service, the cost is \$200. Your lifetime membership donation is tax-deductible as allowed by law.

#### Benefits

- Lifetime membership card and pin
- Invitations to memorable local and national events
- Monthly News from Girl Scouts digital newsletter
- 10% off Girl Scout merchandise purchased [online](#)

#### What Impact Does Lifetime Membership Have on the Movement?

Becoming a lifetime member ensures continuous membership and a lifelong connection to Girl Scouts no matter where the member is located. Girl Scouts goes with you! This is one way for Girl Scouts to provide a path to engagement after high school graduation and keep former girl members engaged in the Movement.

- For every lifetime membership received by GSUSA, \$25 is granted to the lifetime member's local council to fund one year of Girl Scout membership for a local girl in an underserved community.
- Lifetime members can play a part in fulfilling the needs of a council through roles such as:

**Invested stakeholder.** Lifetime members can help elevate the brand because they understand why Girl Scouts is important to their local community and beyond.

**Prospective volunteer.** Time is valuable! Did you know that 20 percent of lifetime members are volunteers with Girl Scouts? Let's make it more!

**Prospective giver.** Lifetime membership encourages a culture of philanthropy for graduating girls and adults. Lifetime membership is a donation and lifetime members can be considered prime candidates in future annual and planned giving campaigns.





## Get Ready with Girl Scouts

Current Pre-K and Kinder girls who join Girl Scouts for the first time through our Extended Year Membership from April through June will receive a dedicated new Daisy summer experience ---

- 3 activity books mailed monthly directly to new Daisy Girl Scouts, available in English and bilingual (Spanish) versions
- Ongoing email nurturing from GSUSA with additional activities like national patch programs and information about
- Invitations from councils to local summer events and troop formation meetings



New gifts  
when you  
join today!

Spread the news and share the fun of Girl Scouting with those that are just able to experience it!



If you know of a community event that would be beneficial for GSKH to be present at, please contact your Troop Engagement Specialist.

If volunteers within your service unit are able to promote Girl Scouting at county fairs, parades, etc, please do so! Contact us and we can assist with some marketing materials!





Other



# National Council Delegates Wanted for the 2026 National Council Session!



National Council delegates and alternates must:

- be a citizen of the United States of America as set out in GSUSA's Congressional Charter.
  - be a registered member of the Girl Scout Movement.
  - be at least 14 years of age at election, November 1, 2025.
  - be able to consider a broad spectrum of the opinions of adult and older girl members from all parts of the council.
  - be willing to prepare thoroughly on the issues and business that will come before the National Council.
- Complete and submit the National Council Delegate application along with two letters of reference **by July 1, 2025.**
- <https://www.kansasgirlscouts.org/en/discover/national-council-delegates.html>
- Submitted applications will be reviewed by the council's Board Development Committee and a slate of nominees will be elected by Girl Scouts of Kansas Heartland members on November 1, 2025 during the Annual Meeting.
- Travel to Washington D.C. for the July 20-25, 2026 NCS and National Convention.  
Girl Scouts of Kansas Heartland will pay up to \$2,000 on expenses (approximately two-thirds of the cost) per elected delegate for NCS-related travel, registration, lodging, meals and other considerations for the 2026 NCS.





PRESENTING SPONSOR:  
HIGH TOUCH TECHNOLOGIES

THURSDAY, JUNE 26, 2025

5-8 PM @ BRICK & MORTAR EVENT VENUE  
230 S. TOPEKA, WICHITA KS 67202



## You're invited to join us at the Fifth Annual Cookies on Tap!

Join us for an evening of local craft beers paired with famous Girl Scout Cookies. All proceeds from the evening help Girl Scouts of Kansas Heartland provide girls with membership as well as experiences at Girl Scout camp and various programs as well

**Attendees must be 21+ to enter the event. No girls will be present at the event.**

During the event, we'll have a DJ, prize drawings and light snacks. Each event ticket receives a sample pairing of each craft beer from a local brewer with a cookie, one full pour of your choice in a special edition take-home commemorative glass and one free drawing ticket. Additional tickets and t-shirts can be purchased at the event.

Thank you to our **Presenting Sponsor High Touch Technologies** for making the event possible!

Click here to purchase your tickets: <https://www.eventbrite.com/e/cookies-on-tap-tickets-1333354752959?aff=ebdssbdestsearch>



Girl Scouts across Kansas can submit entries to the Kansas State Fair using items they have created throughout the year.

There will be a Pinewood Derby on September 7 at 4 p.m.

Online entries for these exhibits open on May 1 and end on August 1.

You can find more information on the [kansassstatefair.com](https://kansassstatefair.com) website.

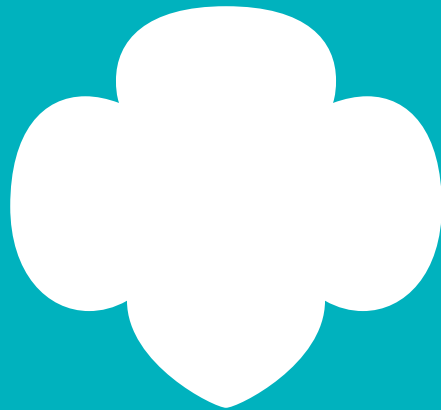
All rules, exhibit classes and information can be found under the "Competition" tab; "Competitive Exhibits", then "Scouts".

Questions should go directly to the exhibit manager, Kathy Dunn, 620-200-0442; [all4dunn@hotmail.com](mailto:all4dunn@hotmail.com).



# KANSAS STATE FAIR EXHIBITS





**The next edition of The Scoop will be on June 23 at 8 p.m**

**There will not be a Scoop in May!**